

MC-S60

Date of printing 25-5-2024

Technical data

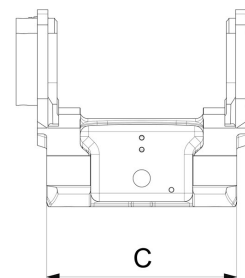
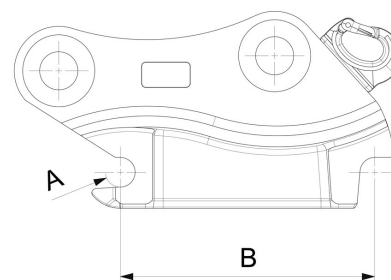
NOTE: The photo shows a general example of the product.

| | |
|----------------------|----------|
| [Weight] | 160 kg |
| [MinLockPressure] | 30 bar |
| [MaxLockPressure] | 120 bar |
| [OpeningPressure] | 350 bar |
| [MaxPositiveTourque] | 150 kNm |
| [MaxNegativeTourque] | 75 kNm |
| [MaxLoad] | 5000 kg |
| [MaxMachineWeight] | 19000 kg |



Measurement specification

| A | B | C |
|--------|--------|--------|
| Ø60 mm | 480 mm | 338 mm |



The products in the photos may have additional accessories and features. Technical data and weights may vary depending on the configuration and equipment. We reserve the right to change specifications or designs without prior notice and assume no responsibility for any actual errors that may occur. There may be variations in product programs and equipment standards between the markets. For more information concerning current product specifications, local adaptations and special equipment, please contact your nearest sales office.