

# MC-QC70

Date of printing 25-5-2024

## Technical data

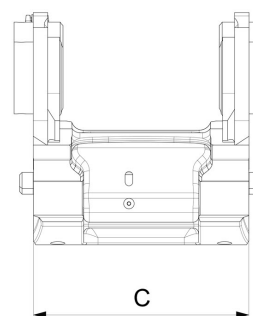
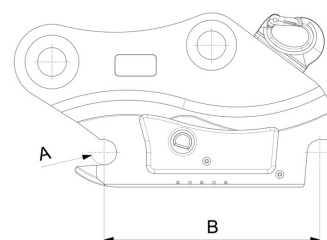
NOTE: The photo shows a general example of the product.

[Weight]	295 kg
[MaxLockPressure]	350 bar
[MaxPositiveTourque]	300 kNm
[MaxNegativeTourque]	195 kNm
[MaxLoad]	8000 kg
[MaxMachineWeight]	30000 kg
[MaxWorkPressure]	35 MPa
[MinNoOfCouplings]	2
[MaxNoOfCouplings]	5
Max flow 1"	361 l/min
Max flow 3/4"	193 l/min
Max flow 1/2"	92 l/min



## Measurement specification

A	B	C
Ø70 mm	600 mm	449 mm



The products in the photos may have additional accessories and features. Technical data and weights may vary depending on the configuration and equipment. We reserve the right to change specifications or designs without prior notice and assume no responsibility for any actual errors that may occur. There may be variations in product programs and equipment standards between the markets. For more information concerning current product specifications, local adaptations and special equipment, please contact your nearest sales office.