

MC-QC45-5

Date of printing 25-5-2024

Technical data

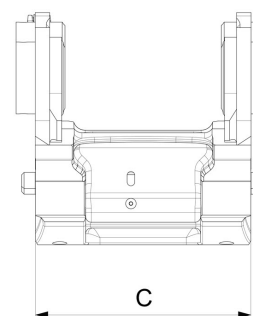
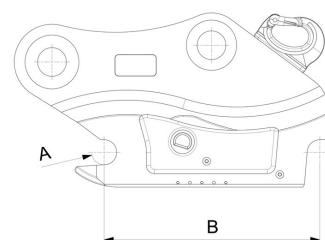
NOTE: The photo shows a general example of the product.

[Weight]	84 kg
[MaxLockPressure]	350 bar
[MaxPositiveTourque]	80 kNm
[MaxNegativeTourque]	52 kNm
[MaxLoad]	3000 kg
[MaxMachineWeight]	12000 kg
[MaxWorkPressure]	35 MPa
[MinNoOfCouplings]	2
[MaxNoOfCouplings]	5
Max flow 1/2"	92 l/min
Max flow 1/4"	22 l/min
Max flow 3/8"	40 l/min



Measurement specification

A	B	C
Ø45 mm	430 mm	289 mm



The products in the photos may have additional accessories and features. Technical data and weights may vary depending on the configuration and equipment. We reserve the right to change specifications or designs without prior notice and assume no responsibility for any actual errors that may occur. There may be variations in product programs and equipment standards between the markets. For more information concerning current product specifications, local adaptations and special equipment, please contact your nearest sales office.